



Ainslie Parklands Primary School
Hinkley Ave, Croydon 3136
Ph: 9870 1566 Website: ainslieparklandsps.vic.edu.au

ISSUE #10 | FRIDAY 19TH JULY 2024

THE AINSLIE UPDATE

DATES TO REMEMBER

Term 3 2024

22nd July - MiniKids
29th July - Secondhand Uniform Shop
3pm -3.45pm
1st Aug - 9.15am Community Coffee
5th Aug - **STUDENT FREE DAY**
8th Aug - MiniKids
10th Aug - Paint 'n Sip fundraiser
12th Aug - Secondhand Uniform Shop
3pm -3.45pm
12th Aug - School Council
13th & 14th Aug - Goal Setting Conferences
19th Aug - MiniKids
26th Aug - Book Week
26th Aug - Secondhand Uniform Shop
3pm -3.45pm
28th Aug - Athletics Day
29th Aug - Father's/Special Person's Stall
2nd Sept - F-2 Incursion
5th Sept - MiniKids
9th Sept - Secondhand Uniform Shop
3pm -3.45pm
9th Sept - School Council
10th Sept - District Athletics
16-20 Sep - Swimming
20th Sep - Last day Term 3, 2.30pm
dismissal

Term 4 2024

7th Oct - First day Term 4
8-9 Oct - 3/4 Camp
10th Oct - Year 6 Graduation & whole
school photo
22nd Oct - 9.15am Community Coffee
4th Nov - **STUDENT FREE DAY**
5th Nov - Melbourne Cup Day
18-20 Nov - 5/6 Camp
20th Dec - Last day Term 4, 1.30pm
dismissal

Science afternoon

At the end of last term, students voted for a Science afternoon as their reward for earning so many positive tokens during the term. Student loved the hands-on science activities prepared. Thanks, Scott, for organising an educational and fun afternoon!



Please arrive on time

While we do understand that sometimes it can't be helped, we ask that as much as possible, please ensure that your children arrive at school on time. We know that many of our children do not like to arrive late as they are much more noticeable to others when they arrive, and this increases their anxiety. They also miss out on the outline of the day's activities, and the explicit teaching that provides understanding for work tasks. Predictable school morning routine gives students a sense of calmness and safety, increasing positive wellbeing. We thank you for your help and understanding.

Community Engagement Team

We are incredibly lucky to have such an amazing Community Engagement Team. To express an interest in being part of the team, or to make some suggestions please email:

janebennettsbrown@gmail.com

School Uniform

We do understand that sometimes the uniform is in the wash and children wear other clothes to school. However, we are encouraging our families to ensure that students are in full school uniform as much as possible. If you are short on a few items, why not have a look at our **second-hand uniform** shop? It is located behind the green door near the canteen and items are a gold coin donation. Opening times and dates are in the calendar on page one of this newsletter,

Parent Reading Program

We have an amazing group of parents/grandparents, who are reading with students across the school every single day. Even in the short time the program has been running, we can already see growth in ability, confidence and enthusiasm in Reading. We would still **love some more volunteers** - if you are able to help with this rewarding contribution, please contact the office. Thank you!



Student Voice Team

APPS Healthy Eating Cookbook

In the past few Student Voice Meetings, we discussed the launch of an Ainslie Parklands Primary School Health Cookbook. The point of the book is to get more people to eat healthy meals and improve their overall health.

If you would like to contribute a healthy recipe to the APPS Healthy Cookbook, please email your recipe to Jane.Capon@education.vic.gov.au or drop your recipe in at the office.

We hope to inspire you to eat more healthy food with our new cookbook!

-by Jenelia

Healthy Cookbook Cover Competition!!

We are having a cover competition for our APPS Healthy Eating Cookbook. We are asking for students to create a picture/drawing for the front cover for our cookbook (with the theme of healthy eating). The winner of the competition will have their cover printed on our cookbook and will get an amazing prize!

- *by Jacob*

Driving safely around school

We have noticed some incidents of late where parents are parking in no parking zones opposite the back carpark (so cars that are parked correctly cannot leave), or trying to drive through the back carpark (which is one way) in the opposite direction.

Please also note that reversing your car around a school requires a higher level of vigilance and care, as children can impulsively run behind a reversing car.

For the safety of our children and our school community, please adhere to the road rules and drive safely. We thank you for your cooperation.

Maths at APPS

When working with our Melba College Maths group, our students challenged themselves devising complicated equations equalling 20, even impressing Ben Hodgins, who teaches VCE Maths at Melba!



Foundation enrolments 2025

Our school is using an online system for new Foundation (Prep) enrolments to Victorian government schools, called VicStudents.

To get started, visit:

<https://students.educationapps.vic.gov.au/s/> to create an account and complete the online application form by **Friday 26 July 2024**. If you would prefer to submit a paper application form, please contact us.

* We will then review the information submitted and be in contact with you by Friday 9 August 2024.

* You should **accept one enrolment** offer by Friday 23 August 2024. When accepting an offer, you will be required to provide additional personal and health information that will be shared with the school.

Is VicStudents secure?

VicStudents has been assessed by the Department of Education to a high degree of security in line with the Victorian Protective Data Security Standards and is compliant with ISO 27001, the leading international standard for information security.

More information

The Department of Education has created a Quick Reference Guide to help you get started.

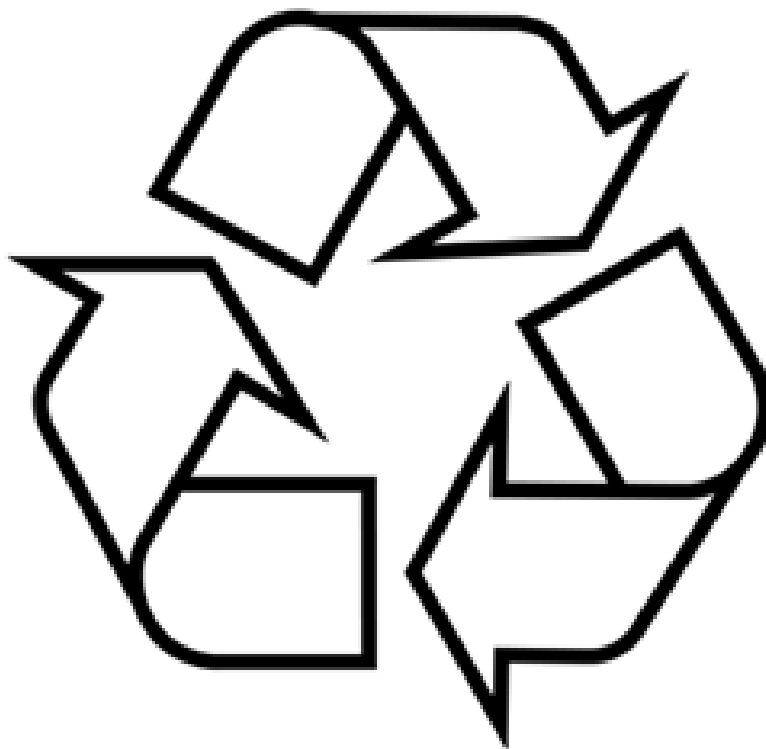
We have already had families enrol their child for Foundation 2025 via the new online system. If you have any further queries about the process, or would like to book a tour, please contact the office.

Recycling at APPS

Written by Maeve Markham, Sustainability Leader

At APPS we like to be sustainable and that includes putting rubbish in the right bin. Putting rubbish in the right bin helps keep the environment clean and the school. The four bins we have at APPS are; paper recycling, waste to landfill, compost and regular recycling.

In the paper recycling we put cardboard (without tape) and paper. In waste to landfill, we put in soft plastics (chip packets etc.) polystyrene, plastic bags and tape, and straws. Compost is food scraps and tissues. Recycling is hard plastics and cans. We are currently not doing the 10c container deposit scheme, but watch this space!



Maths at Ainslie Parklands Primary School

In recent years, the way we do Maths at APPS has been reformed. Using evidence based approaches and advice from experts, we have updated the way we teach and learn Maths at our school.



To go with our updated approach to Maths, we have developed a Mathematics Vision Statement:

At Ainslie Parklands Primary School, Mathematics empowers students to take risks and generate strategies to rigorously explore and solve meaningful problems. Teachers facilitate this through mathematics with real world applications, open ended and accessible challenges that are fun and engaging. Each student strives for excellence in tasks that challenge and extend their learning so they experience success.

Some students assisted in making this video sharing our vision for Maths at Ainslie Parklands Primary School. [Either click on this link or scan the QR code to watch.](#)



“Students with more than 20 absences in a year (or 5 absences in a term) are considered significantly at risk in their learning and social development.”

Student Attendance – Every Day Counts

The following extract comes from the DET

website:<http://www.education.vic.gov.au/about/programs/health/Pages/studentattendance.asp>

*‘We all want our students to get a great education, and the building blocks for a great education begin with students coming to school each and every day. Missing school can have a major impact on a child’s future – **a student missing one day a fortnight will miss four full weeks by the end of the year. By Year 10 they’ll have missed more than a year of school.** There is no safe number of days for missing school – each day a student misses puts them behind, and can affect their educational outcomes. Coming to school every day is vital, but if for any reason your child must miss school, there are steps you can take to ensure they don’t fall behind:*

- *Speak with your classroom teacher or year level coordinator and find out what work your child needs to do to keep up.*
- *Develop an absence learning plan with your school and ensure your child completes the plan. Remember, every day counts. If your child must miss school, speak with your classroom teacher or year level coordinator as early as possible.’*

Just a bit late doesn’t seem much but

He/she is only missing just	That equals	Which is	And over 13 years of schooling that’s ...
10 minutes per day	50 minutes per week	Nearly 1.5 weeks per year	Nearly Half a Year
20 minutes per day	1 hour 40 mins per week	Over 2.5 weeks per year	Nearly 1 year
Half an hour per day	Half a day per week	4 weeks per year	Nearly 1 and a half years
1 hour per day	1 day per week	8 weeks per year	Over 2 and a half years

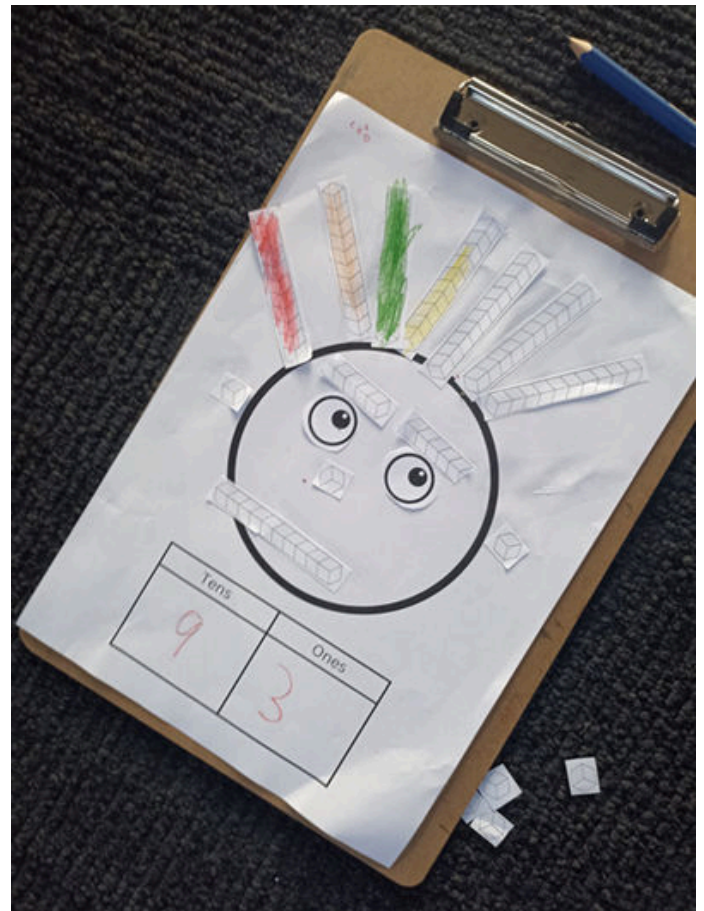
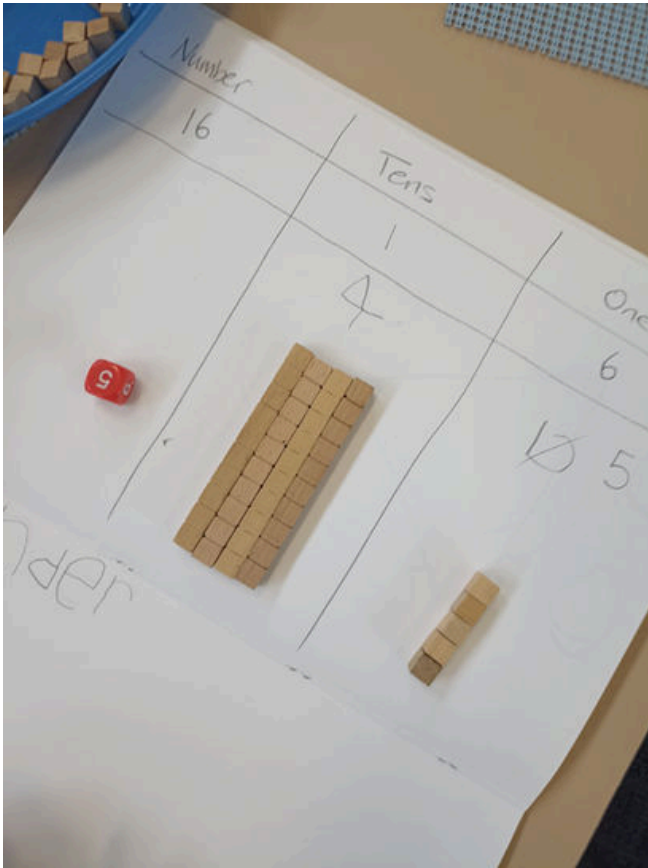
Did you know your child’s best learning time is the start of the school day?

That’s when every minute counts the most!!!!

From Foundation

The Foundations have had a wonderful start to Term 3!

In Maths we have been exploring place value, which has provided opportunities to use place value blocks and explore some bigger two-digit numbers. A favourite activity this week involved creating a funny face with place value blocks and then recoding the total number of blocks in terms of tens and ones.



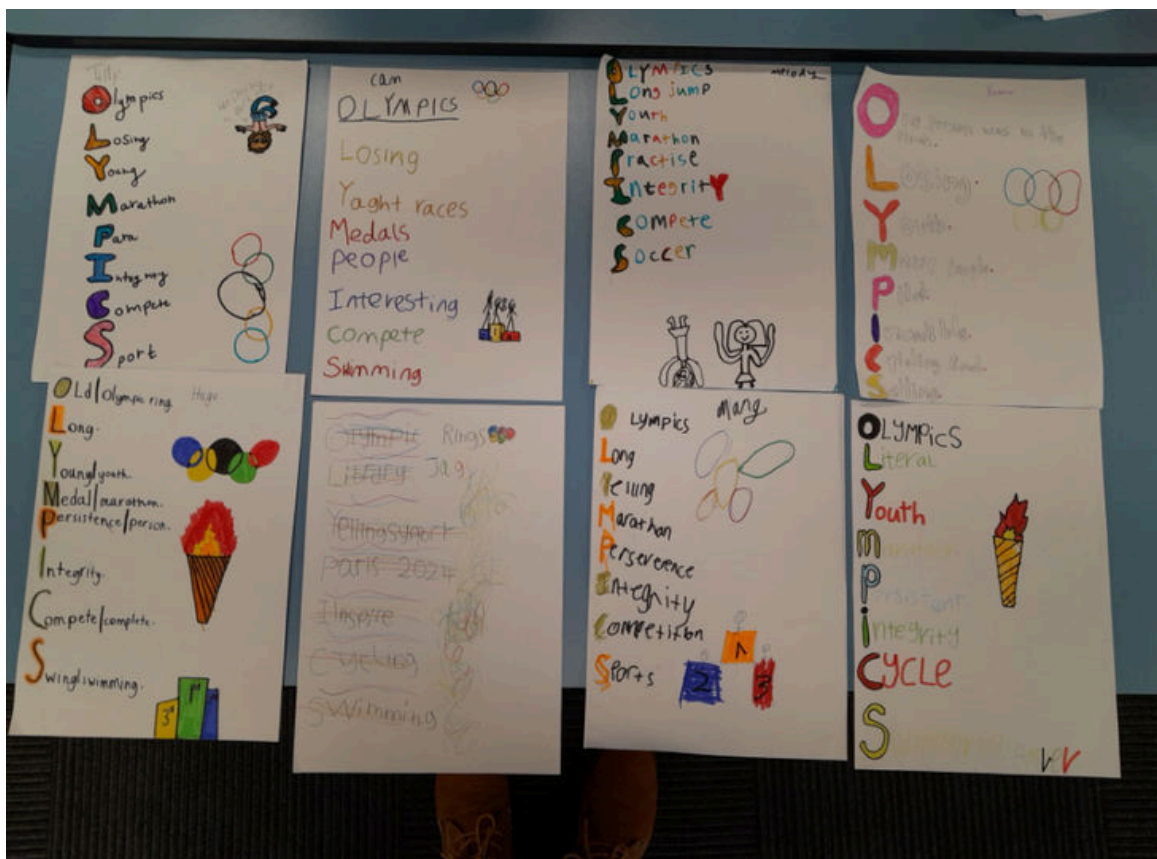
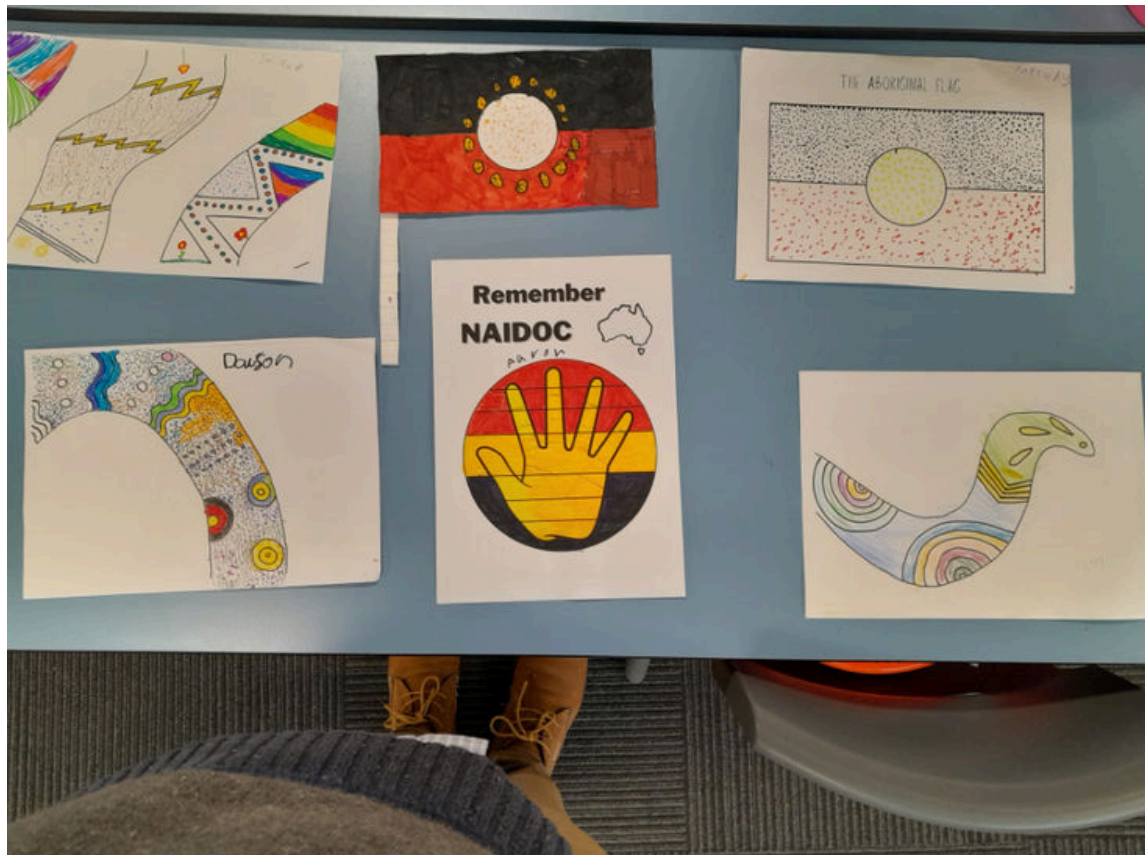
From Levels 1-2

Maths at APPS is exciting, positive and active. This week 1-2 students have been consolidating their knowledge of place value in Maths. Using hands-on strategies with concrete materials, place value games and an iPad scavenger hunt, we are ready to take that knowledge into our next topic, money.



From Year 3

This week we have been working on Activities for NAIDOC week where the children completed a drawing in Aboriginal art style using dots and colours usually shown in Aboriginal artwork. As a literacy activity we created Acrostic poems on the Olympics using single words or phrases and began the week doing a recount of our holidays. For Maths we have started a unit on Time using clockfaces and showing o'clock, quarter past and half past.



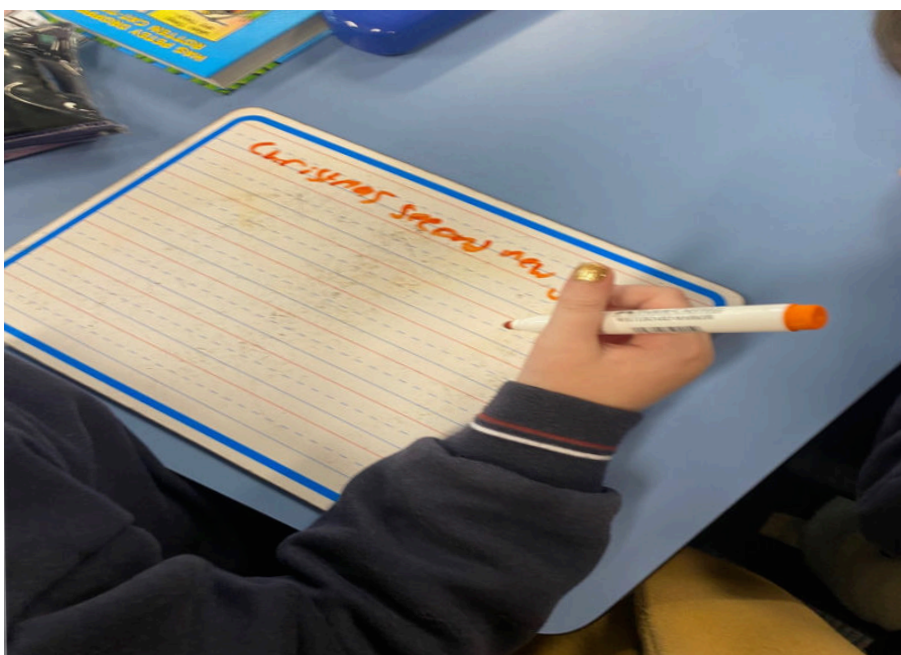
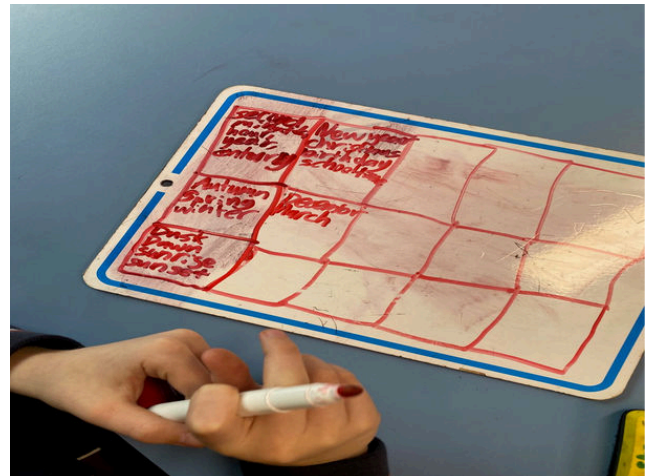
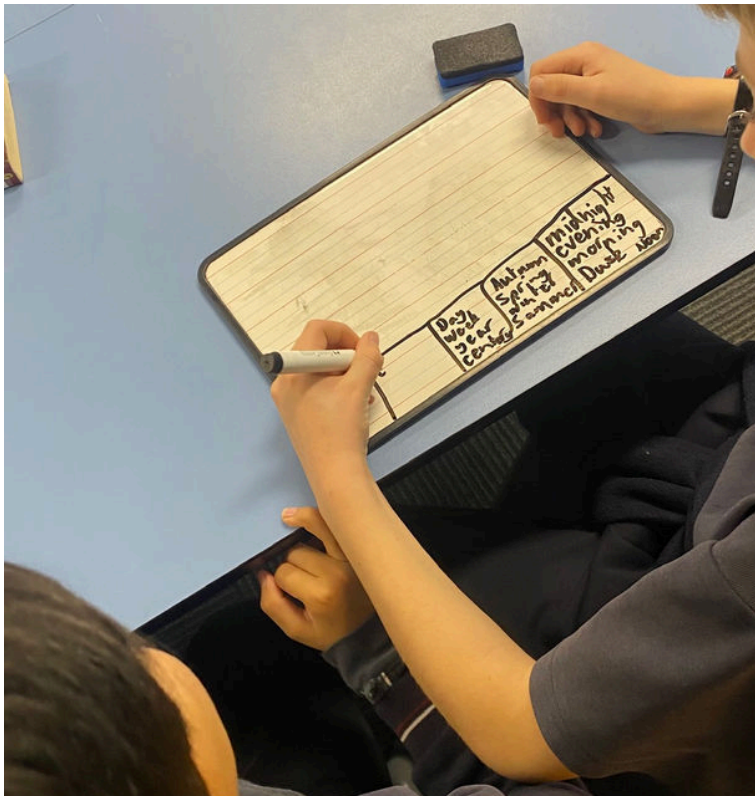
From Year 4/5

Students have had a great start to Term 3! We have settled into our schedule and welcomed a new student to the classroom.

Our current reading and writing focus is recounts. In writing, we are working on engaging our audience with bold beginnings, interesting word choice, time connectives, emotion and opinions.

In maths we are developing our skills for time. Students will be practicing telling time to the minute, 24 hour time, schedules and timetables.

We are looking forward to a busy term of learning!



From Year 5/6

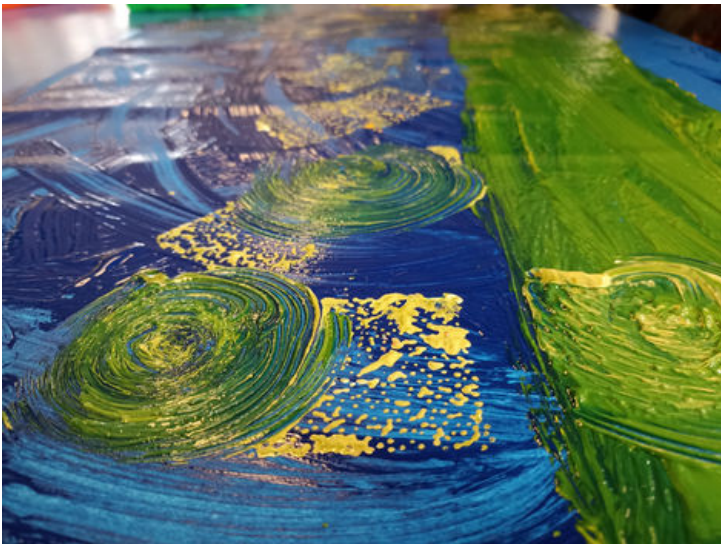
It's been a busy first week back in the 5/6 Classroom. In Maths, we've commenced a short unit on time where are focusing on telling time, calculating elapsed time, and converting time. The 5/6 Inquiry focus of this term is Sustainability and Geography, in the coming weeks students will be exploring what makes a building sustainable, different sustainability strategies, and will prepare to construct a model sustainable house. Also keep an eye out in our newsletter for Sustainability News, written by our sustainability leaders.

In Writing, we've completed a short unit on recounts which saw us revisiting our Writing Process. Throughout this process students also explored giving and receiving feedback to improve their writing. In the coming weeks students will be setting and begin working towards new personal writing goals.



From The Art Room

This term in Art all year levels will have the opportunity to create with paint! The Foundations started off this week by exploring texture in paint, using all sorts of tools and techniques to make interesting marks and textures on their paper.



SIP & PAINT VINTAGE WATERCOLOUR FLOWERS

The Ainslie Parklands PS Sip and Paint is a relaxing social night for adults for the school and the wider community. Thanks to some very generous local businesses there is an online auction too.

For this years Sip and Paint workshop, we will be creating a 'retro inspired' floral on canvas. Participants will be guided to design and paint using different watercolour painting techniques to produce a nostalgic, retro inspired painting.



Cost: \$35 per person
(purchase via the office)

Date: Saturday August 10th

Time: 6-8pm

Location: The Art Room (at Ainslie Parklands PS, enter via front office)

Food & Drink: BYO or see attached pizza menu

FATHER'S AND SPECIAL PERSON'S DAY STALL

THURSDAY, AUGUST 29TH

DURING SCHOOL HOURS

GIFTS PRICED BETWEEN \$1-\$10,
CASH ONLY



PLEASE SEND A SHOPPING BAG FOR THE GIFT AND
MONEY IN A CLEARLY LABELLED ENVELOPE



Father's & Special Persons Day stall

Anyone Feeling crafty?? 🧺🍷👤

Hi families,❤️our APPS Fathers' and Special Persons' Day stall is scheduled in term 3 for Thursday 29th August.

The tradition is that all items sold at the stall are handmade and priced between \$1 and \$10.

There are two ways you can be involved

1 Firstly, We have about 3 stall positions available for interested stall holders.

If you would like to sell some crafty, home made items then this option is for you.

2 Second option, we will have an APPS fundraising table selling handmade items and we'll need help with making these items 😊 we'd love to hear from you if you can help.

please contact Lisa Kanto at play.learn@outlook.com 😊 for more information on how you'd like to help with crafting, or for booking a table to sell.



COME & TRY CLINICS

ALL
SKILL
LEVELS

SUMMER 2024 / 25 SEASON

NEW 5, 6, 7, 8, 9, 10 & 11 YEAR OLDS

GIRLS

**TUESDAY 20TH & 27TH AUGUST
TUESDAY 3RD & 10TH SEPTEMBER**

MELBA COLLEGE STADIUM
COURT 3 4:45PM - 5:45PM

BOYS

**WEDNESDAY 21ST & 28TH AUGUST
WEDNESDAY 4TH & 11TH SEPTEMBER**

MELBA COLLEGE STADIUM
COURT 4 4:15PM - 5:00PM OR 5:00PM - 5:45PM

Please RSVP Peter Cunningham on 0400 577 476

WWW.MAROONDAHMAGIC.COM.AU



Maroondah Magic Basketball Club Inc



Maroondah Magic Basketball Club



FOSTERS
Phantoms

FREE BASKETBALL CLINIC



5 Week 'Come and Try' Clinic

Open to all boys and girls aged 5 to 12 years old wanting to have a shot at basketball and have some fun!



Lilydale Heights College
17 Nelson Rd, Lilydale



Weekly on a Tuesday
Starting Tuesday, 6th August 24



5:00PM - 6:00PM



Register via our website!
www.phantoms.com.au/clinics

www.phantoms.com.au | info@phantoms.com.au | Clinic Contact - Ashleigh (0403693212)

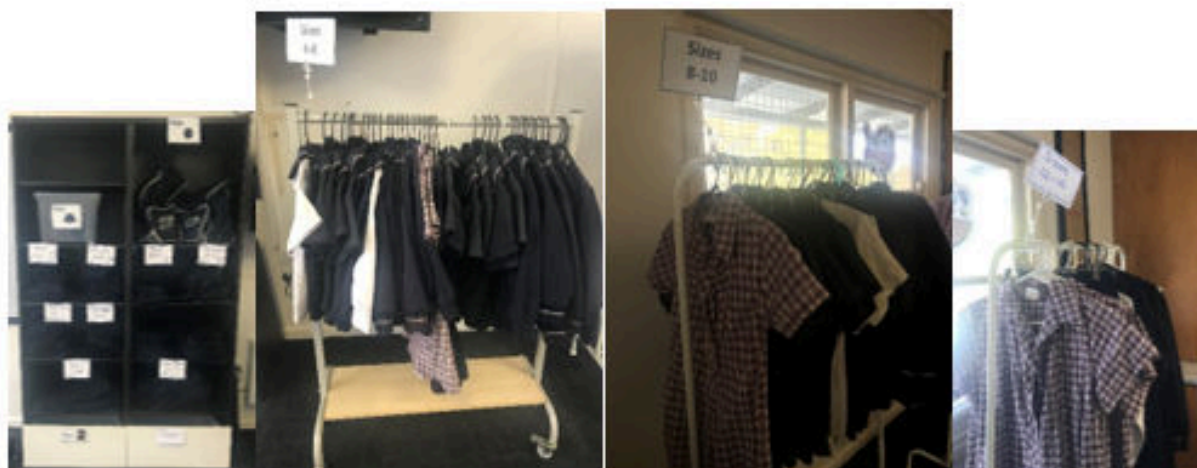


APPS Second Hand Uniform Shop and Lost Property (APPS SHUSLP)

I am excited to announce that the second hand uniform shop will be open fortnightly commencing Monday the 6th May 2024 and is located next to our old canteen in what was once our OHSC room.

How much will the items cost I hear you ask? Gold coin per item for majority. The occasional item in exceptional quality may have a slightly higher cost. Cash only ☺

What can I expect to find in the APPS SHUS? Bags, Shoes, Polos, Dresses, Pants, Shorts, Skirts/Skorts, Jumpers and Jackets. Sizes range from 4 to 16. It's well worth a look.



What time and days is the shop open? Mondays fortnightly from 3 to 3.45

Can I take my old items and drop them to the shop? Yes, of course you may. On the other hand, you can leave them at the office. Please only donate items in freshly washed wearable condition that another child would be proud to wear to school.

If anyone would like to volunteer to help with the shop in any way, please email katherine.szymanski@education.vic.gov.au

Katherine Szymanski

School Council President



AINSLIE PARKLANDS PRIMARY SCHOOL

UNIFORM PRICE LIST

Effective 1/5/24 - 28/2/25



Item	Code	Colour	Size	Price
Summer Dress	RHDRS04TCG	Maroon/Navy/ White	Child	\$ 49.95
			Adult	
Winter Tunic	1749.TUNIC	Ink Navy/ Wine/White	Child 4 & 6	\$ 60.00
			Child 8 & 10	\$ 62.00
Winter Skirt	1749.SKIRT	Ink Navy/ Wine/White	Child 12,14,16	\$ 52.00
S/Sleeve Polo with Side Panel	1749.POL05TCS	White/Navy/Mar	Child	\$ 36.00
			Adult	
S/Sleeve Polo with Side Panel	1749.POL05TCS	Navy/Mar/White	Child	\$ 36.00
			Adult	
L/Sleeve Polo with Side Panel	1749.POL06TCS	White/Ink Navy/ White Piping	Child	\$ 40.00
L/Sleeve Polo with Side Panel	1749.POL06TCS	Ink Navy/Wine/ White Piping	Child	\$ 40.00
Crew Neck Windcheater	1749.WCH01TCP	Navy	Child	\$ 31.00
			Adult	\$ 33.00
Bomber Jacket	1749.JKT02TCS	Navy/Mar/White	Child	\$ 50.00
			Adult	
Jersey Short	RHSOR01TCP	Navy	Child	\$ 22.00
			Adult	\$ 24.00
Skort	RHSOR07TRP	Navy	Child	\$ 25.00
Active Stretch Pant	RHACTPANT	Navy	Child	\$ 31.00
Track Pant Straight Leg Reinforced Knee	RHTRP04TCP	Navy	Child	\$ 29.00
Track Pant Cuff Leg Reinforced Knee	RHTRP02TCP	Navy	Child	\$ 29.00
Bucket Hat	1749.BUCHATADJ	Navy	S - XL	\$ 14.00
Art Smocks	RHARTSMOCK	Red or Royal	S, M, L	\$ 21.00
Active Pak School Bag	1749.HB2-8709	Navy	25 Litre	\$ 45.00

Spartan School World Ringwood

Unit 12/100 New Street

Ringwood 3134

Trading Hours:

Monday - Friday 9.00am - 5.00pm

1st Saturday of the month 9.00am - 12.00pm

Ph. 03 9837 9731 E. onlineorders@spartanss.com.au

To place an order please visit:

www.spartanschoolworld.com.au

Select your School in the FIND MY SCHOOL list

Shipping Options:

Free School Delivery - weekly during school terms

Click & Collect

Postage to private address \$12.50

RITCHIES **IGA** + LIQUOR



RITCHIES CARD WELCOME OFFER



- 1 Join and activate your Ritchies Card or App.
- 2 Visit a store within 14 days, spend \$100* or more in a single transaction and scan your Ritchies Card or App.
- 3 **Get \$10 off instantly.** Valid for one transaction.



Download the Ritchies Card App and select the club, school or charity that you wish to support.



RITCHIES CARD



Download on the
App Store



GET IT ON
Google Play

*Terms & Conditions apply. See ritchies.com.au for details. Excluding cigarette & tobacco products, gift cards, electronic recharge and items marked reduced to clear. Liquor can be used to obtain the discount.



AINSLIE PARKLANDS
PRIMARY SCHOOL

Playgroup

When: Friday 9.15am-10.45am
during the school term

Where: 24-36 Hinkley Ave,
Croydon (in the hall & new
playground)

Contact: 98701566

ainslie.parklands.ps@education.vic.gov.au